



AL - RAIEDAH UNDERWATER LTD

شركة الرائدة تحت المائية المحدودة

Offshore Construction Solutions

Global offshore company offering diverse services, adhering to international standards, based in Saudi Arabia.





AL - RAIEDAH UNDERWATER LTD

شركة الرائدة تحت المائية المحدودة

Table of CONTENTS

01

Introduction

- [About Us](#)
- [Company Principles](#)
- [Core Values](#)

02

Services

- [EPC Contractor Support](#)
- [Subsea Installations Operations](#)
- [Subsea Infrastructure Installation](#)
- [Offshore Operations](#)
- [Subsea Intervention Operation](#)
- [Offshore Survey Operations](#)

03

Resources

- [Marine Vessels](#)
- [Commercial Diving](#)
- [Remotely Operated Vehicles \(ROV's\)](#)
- [Hard Ground](#)
- [Trencher Mutli-Reel Drive System \(MRD\)](#)
- [Cable/Flexible Laying Equipment](#)

04

Contact Us

[Contact us for inquiries and project collaborations.](#)
[We're here to assist with your offshore needs.](#)



About Us

Offshore Construction solutions

Alraiedah Underwater LTD was established in 2022. Alraiedah has evolved since 2022 into an offshore construction company providing enhanced services covering worldwide operations. The company ethos has been to recognize client needs and determinedly develop quality products and services to fulfil these requirements, in addition to maintaining the highest international standards of health, safety, quality and environmental protection during any type of performed operation.



Owned and Operated Assets

Today, the majority of our business lines are conducted using our owned and operated assets. This ensures control, efficiency, and reliability in the delivery of our services.

Facilities and Location

Based in the Kingdom of Saudi Arabia, we operate from a large yard facility that provides comprehensive support services to our fleet of equipment and marine vessels.



Global Reputation

Alraiedah Underwater is a proven company of international repute, capable of undertaking worldwide operations. Our track record speaks volumes about our expertise, reliability, and commitment to excellence in the offshore construction industry.



Company

Our Principles

Our Vision

“Pioneering innovation and setting industry benchmarks to become a global leader in offshore construction solutions.”

Our Mission

“Delivering excellence in offshore construction services while prioritizing safety, quality, and environmental sustainability.”



Company

Core Values

Integrity

We uphold honesty and transparency in all our dealings, fostering trust and credibility with clients.

Safety is our top priority; we adhere to stringent safety protocols to ensure the well-being.

Safety

Quality

We are committed to delivering excellence in all aspects of our work, maintaining high standards

We embrace innovation to drive continuous improvement and offer cutting-edge solutions.

Innovation

Company Services

EPC Contractor Support

Unlock Your Offshore Project Potential

Alraiedah Underwater has a diverse business model which benefits our EPC clients, by providing options for either an individual services (i.e. diving, ROV, vessel charter, cable laying, etc.) or a complete solution where Alraiedah (UE) will undertake a complete scope using company owned and operated equipment.



Scope of Work

The scopes in which Alraiedah Underwater support EPC clients during the life of an offshore project include, but are not limited to:

- **Mobilization & Readiness:** We ensure seamless project initiation by handling mobilization and readiness tasks, setting the stage for a successful venture.
- **Pre-Lay Surveys (ROV & Divers):** Our advanced survey techniques using ROVs and divers guarantee a thorough assessment of seabed conditions before installation
- **Pre-Lay Support/Stabilization Installation Operations:** Deploying sleepers and mattresses is just one aspect of our comprehensive pre-lay support services, ensuring stability for subsequent installation operations.



- **Subsea Installations:** Expertly execute precise installations for risers, J-Tubes, and more.
- **Subsea Rectification:** Address challenges post-installation with free span corrections and grout bags.
- **ROV Surveys:** Conduct meticulous surveys for accurate project documentation and compliance.

A large red offshore oil rig is positioned in the center of the frame, surrounded by several support vessels. One vessel on the right has a large crane. The scene is set in the open ocean under a clear blue sky.

Valve Skids and Tie-In's

Company Services

Subsea Installations Operations

Alraiedah Underwater offers diverse options for delivering spools efficiently and economically:

- Choose between delivering spools on barges/supply vessels or wet storing them pre-DSV arrival.
- Spool sizes range from 4" to 48" with lengths up to 82 meters.
- Spools over 45 meters are lifted from cargo barges using two cranes for efficient handling.

J-Tube, Risers & Clamps

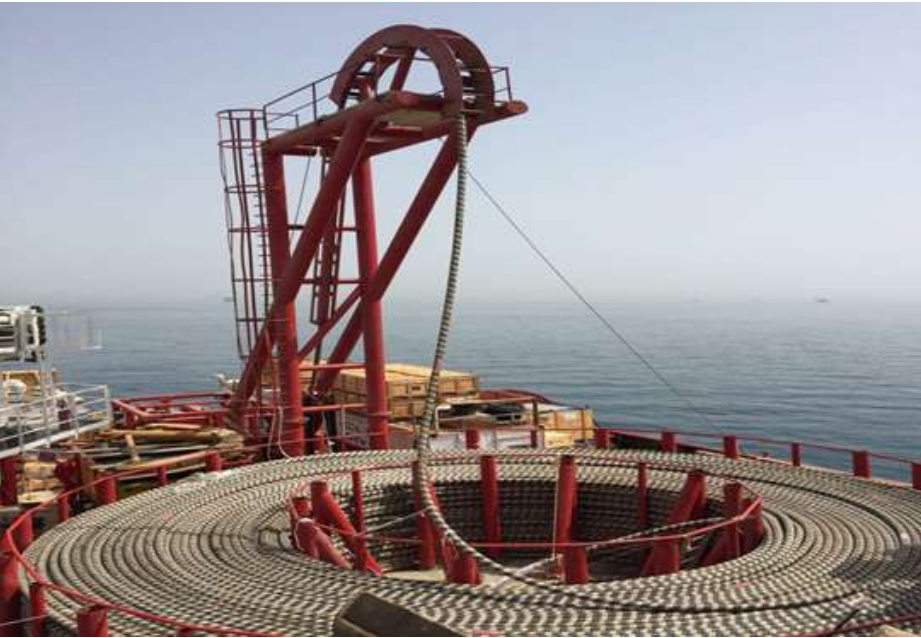
Alraiedah Underwater offers design, fabrication, and construction services for J-tubes, Risers, and associated clamps. Clients can choose

- Installation of J-tubes/Risers in single sections or flanged sections for flexibility.
- Utilization of two cranes onboard our vessels, eliminating the need for large crane-equipped barges.
- Installation of Risers & J-tubes up to 70 meters long in a single bundle for efficient deployment.



Company Services

Subsea Infrastructure Installation



Shore Pulling Operations

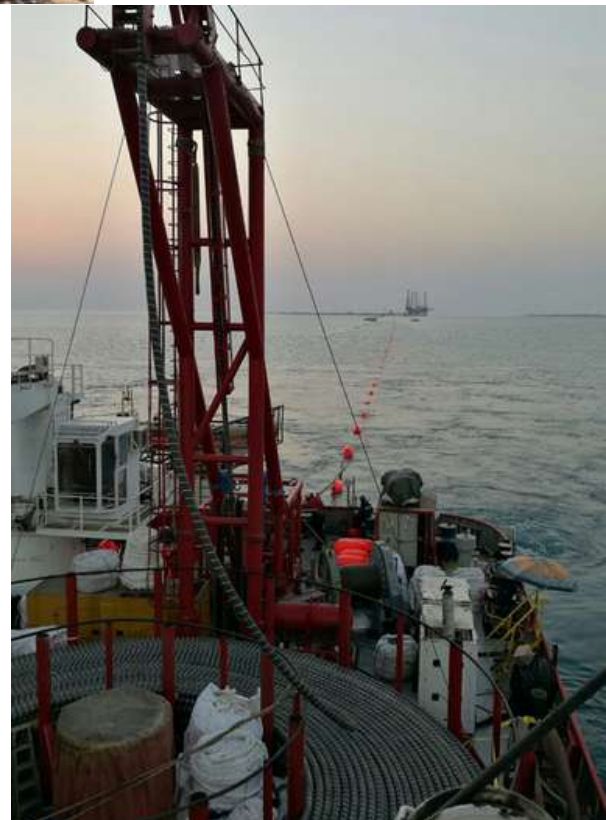
Alraiedah Underwater offers cable and flexible shore pull services for laying and installing cables or flexibles between onshore locations or islands.

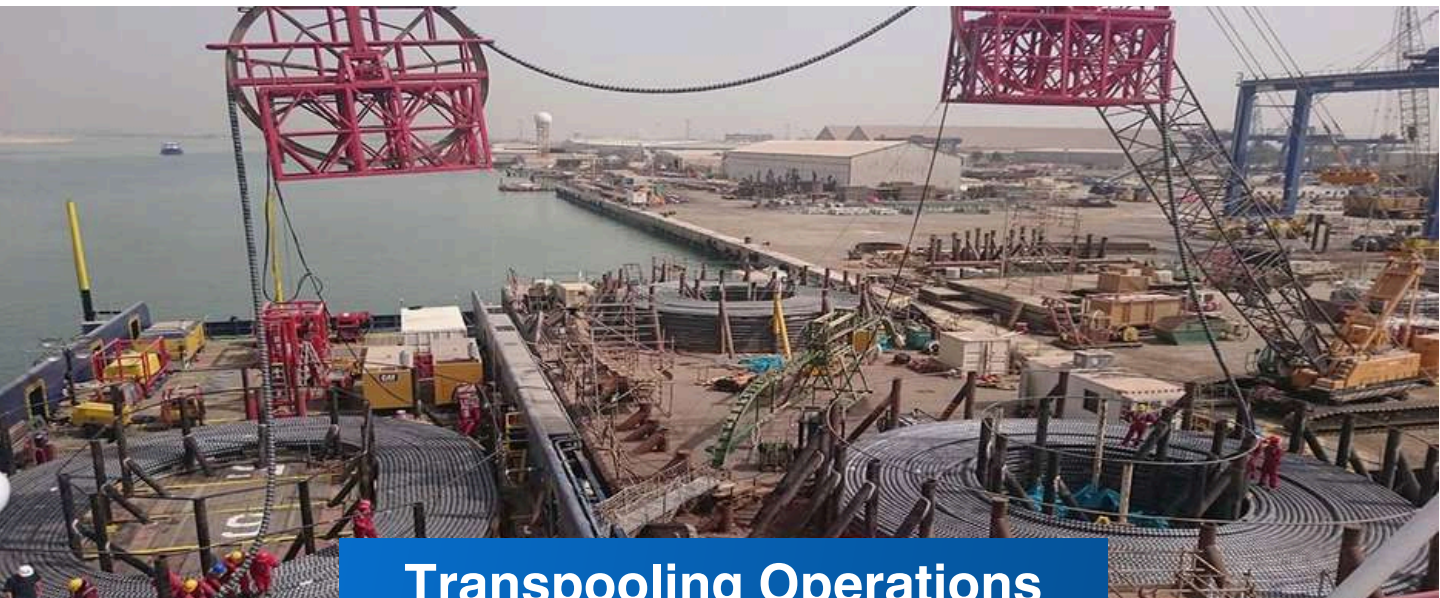
Cable, Umbilicals and Flexible Pipelines

Alraiedah has highly experienced specialized engineers with various spread of equipment to provide clients umbilical and services for submarine cable, flexible installation, testing, termination, repair and maintenance (IRM).

With our expansive fleet of equipment and experienced back deck personnel we can offer various methods for cable / flexible handling, laying and installation, either by collection on to a reel which will be installed on a skid and driven by either Hub drive or Under Rollers (Reel weight up to 1000 tonnes).

Alternatively, transpool submarine cables on to a turn table / fixed basket on vessel's deck.





Transpooling Operations

Alraiedah Underwater provides comprehensive cable transpooling services either at client-designated locations or their Alraiedah-UWE Jetty. With ample yard space, specialized facilities, advanced equipment, and experienced personnel, they ensure efficient and seamless operations. This capability allows them to manage cable transfers effectively, supporting various underwater projects and installations. Alraiedah's versatile approach enables tailored solutions to meet specific client needs, enhancing reliability and performance in underwater cable management.

Key points of the Service

Facilities and Yard Space: Alraiedah Underwater possesses adequate yard space and specialized facilities to handle cable transpooling operations effectively.

Equipment: They are equipped with advanced tools and machinery specifically designed for cable transpooling tasks, ensuring efficiency and safety.

Personnel Expertise: The company employs skilled personnel with experience in underwater operations, enhancing the reliability and quality of their services.

Flexibility: Alraiedah can conduct cable transpooling either at client-specified locations or at their own dedicated jetty, providing flexibility and convenience to clients.

Tailored Solutions: They offer customized solutions to meet the unique requirements of each project, optimizing the cable management process.

Project Management: The company has a structured approach to project management, ensuring timelines are met and operations run smoothly from start to finish.

Various Offshore Operations

Pipeline / Riser Demolition and Recovery

Alraiedah Underwater specializes in safely demolishing and recovering underwater pipelines and risers, ensuring efficient removal and environmentally responsible disposal. Their expertise enables the effective management of underwater infrastructure, contributing to project success and environmental stewardship.



Introduction

Pipeline Repair

Skilled in underwater pipeline repair, utilizing advanced techniques and equipment to address damages and restore functionality.

Pipeline Pre-commissioning & Hydro Testing

Conducts pre-commissioning activities and hydro testing of pipelines to verify integrity and performance before operation.

SPM Installation

Specializes in the installation of Single Point Mooring (SPM) systems, critical for offshore loading and unloading operations.

Hook Up & Topside Services

Offers hook-up services for connecting underwater infrastructure to topside facilities, ensuring seamless integration and functionality.



www.reallygreatsite.com



Company Services

Subsea Intervention Operation

Concrete Mattress Installation

Alraiedah Underwater not only performs grouting operations but also has the expertise to install link-lock mattresses on existing subsea infrastructure. This installation serves to enhance stability and protection. The company possesses and operates deployment frames specifically designed for link-lock mattresses, which can be utilized with either ROV or divers.

Concrete Sleeper Installation

Alraiedah Underwater is proficient in installing concrete sleepers weighing between 10Te and 75Te. These installation operations can be carried out using either ROV or divers from Alraiedah (UE) vessels. Typically, concrete sleepers are installed before pipe laying operations at existing crossings along the designated route.

Company Services

Subsea Intervention Operation



Grouting Equipment

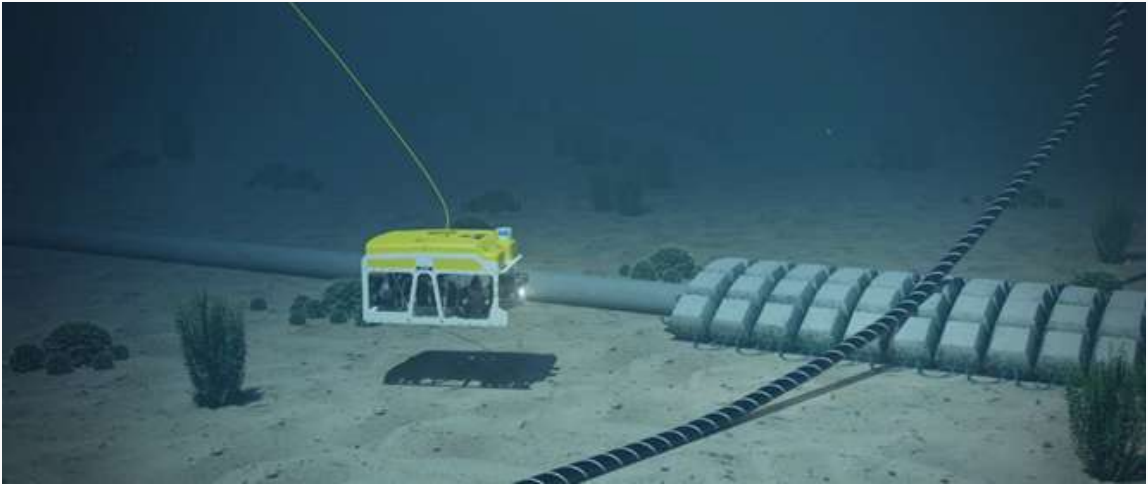
Alraiedah Underwater possesses and operates multiple complete spreads dedicated to conducting grouting operations in support of various subsea activities, including:

- Addressing free span issues using grout bags or mattresses.
- Enhancing pipeline stability using mattresses.



Company Services

Offshore Survey Operations



Survey Services

Alraiedah Underwater utilizes a range of survey equipment to offer surface and sub-surface positioning for offshore operations. They provide inspection, touchdown monitoring, and As-laid/As-built survey services for new or existing cables, pipelines, and platforms.

All inspection operations incorporate digital recording technologies. Clients receive all recorded information through a synchronized viewer on an external hard drive.



Company Resources

Marine Vessels



Pioneer

- ABS Classed, 83.5 m DP-2 (SPS) Multipurpose Support Vessel.
- Year of Build – 2005
- Accommodation for 112 pax + divers in Saturation.
- Offshore 75 & 30 Ton Cranes.
- 650 m² clear deck space.

Maritime 1

- ABS Classed 65 m DP-2 (SPS) Construction Support Vessel.
- Year of Build – 2012 / 2013.
- Accommodation for 76 pax.
- Offshore 30 Ton Crane.
- ~360 m² clear deck space.



Maritime 2

- ABS Classed 65 m DP-2 (SPS) Construction Support Vessel.
- Year of Build – 2012 / 2013.
- Accommodation for 76 pax.
- Offshore 30 Ton Crane.
- ~360 m² clear deck space.



MARINE VESSELS



Wadad Aletheia

- Ice Class Dive Support Vessel
- DNV Classed, 145.9 m DP-3 and DP Enhanced Reliability (ER).
- Year of Build – 2024.
- Accommodation for 200 pax.
- DRASS i100 DNV Classed 24 Man Saturation Diving system, with 2 x SPHL.
- MacGregor 400 Ton & 25 Ton Offshore rated Cranes.
- ~ 1,850m2 working deck space.

Said Aletheia

- ABS Classed, 93.6 m DP-2 (SPS) Offshore Diving Support Vessel.
- Year of Build – 2018.
- Accommodation for 149 pax.
- ABS Classed 12 Man Saturation Diving system, with SPHL.
- Offshore 150 & 50 Ton Cranes.
- ~ 800 m2 working deck space.



Company Resources

Commercial Diving

Air Diving

Air diving equipment is available for 20 operational spreads, with each system generally comprising the following components:

- Containerized Deck Decompression Chamber.
- Diver control panel and communication system, along with backup HP/LP air compressors tailored to job needs.
- 'A' frame winch and basket systems for diver retrieval.
- SCUBA replacement package, including a Rigged Inflatable boat with diving equipment.
- Portable air dive station if needed.
- Storage for high-pressure air and oxygen.
- Comprehensive backup spares for critical equipment.



Company Resources

Commercial Diving

Mixed Gas Diving

Alraiedah presently possesses and utilizes a Mixed Gas Diving system known as the Diver Wet bell System. This system includes key components as outlined in its technical specifications:

- A Skid Base and A-Frame handling system.
- Winches and a Hydraulic Power pack.
- An open bottom diving Wet bell featuring an Acrylic hexagonal dome, onboard life support gas, and communications systems.
- Fixed wet bell hydraulic control mounted on the skid, along with a portable electrical main switchboard and alarm panel.

To operate efficiently, this system requires main and standby electrical power, as well as an external gas supply.



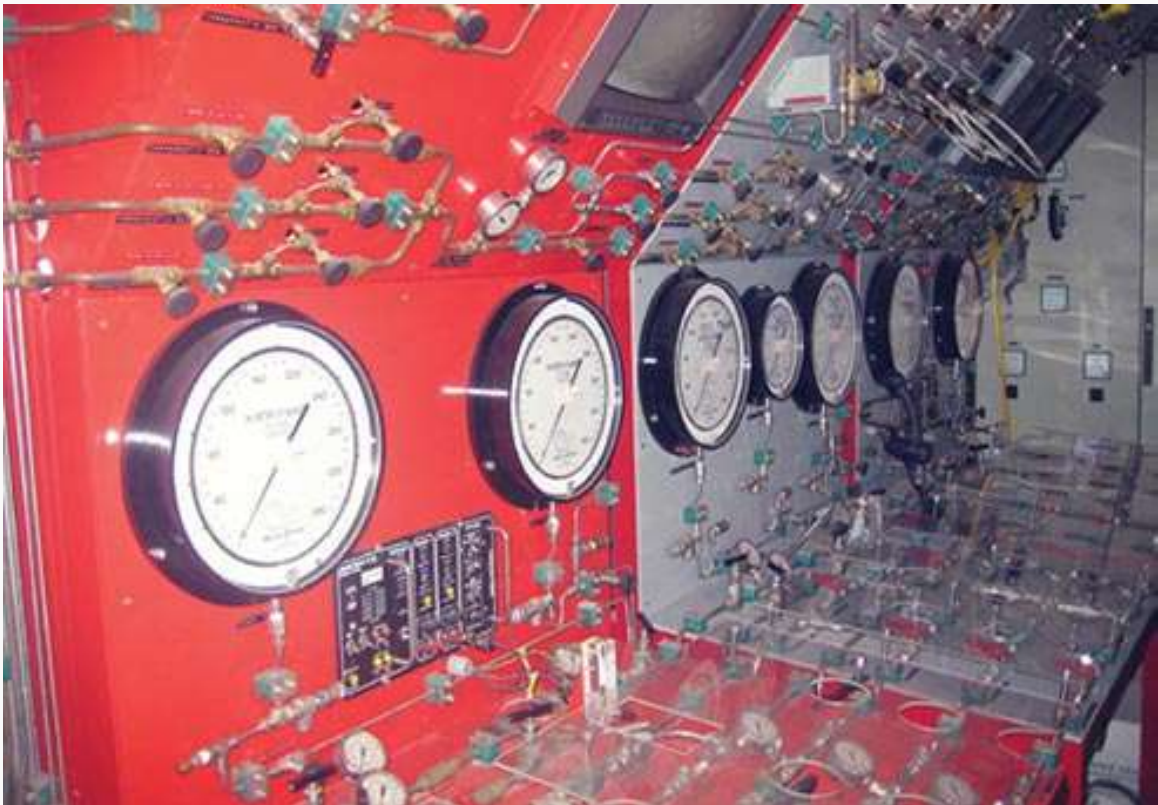
Company Resources

Commercial Diving

Saturation Diving

Alraiedah currently owns and operates several saturation diving systems. All systems are modular and can be configured to match client requirements. All systems come complete with Diver Gas Reclaim and HRC or SPHL.

- SAT IV – 6 Man Saturation Diving System (200 m Depth Rating).
- SAT V – 12 Man ABS Classed Saturation Diving System (200 m Depth Rating), with 3-man bell.
- SAT VI – 12 Man ABS Classed Saturation Diving System (200 m Depth Rating), with 3-man bell
- SAT VII – 12 Man ABS Classed Saturation Diving System (300 m Depth Rating), with 3-man bell



Company Resources

Remotely Operated Vehicles (ROV's)



Observation Class

- 2 x Seabeed Lynx

Inspection Class

- 1 x Seabeed Panther
- 1 x Seabeed Cougar XTi



Work Class

- 1 x Triton XLS 150 HP
- 2 x Seabeed Leopard
- 2 x Seabeed Panther-XT Plus



Muti-Reel Drive System (MRD) RHD – 500Te

The Multi-Reel Drive System (MRD) RHD-500Te is a powerful machine designed for handling massive reels of cable or pipe. Built in 2023, this system boasts a weight capacity of 90 tons and utilizes two VFD-driven towers for precise control.

Key features of the MRD RHD-500Te include:

- **Capacity:** Able to handle reels weighing up to 500 tons
- **Reel Size:** Accommodates standard COFLEXIP reels up to 12.4 meters in diameter
- **Versatility:** Can handle up to three 12.4-meter reels simultaneously

this heavy-duty system can efficiently manage and maneuver extremely large and heavy spools of cable or pipe, making it ideal for various industrial applications.

Hard Ground Trencher SMD – BT500

The SMD-BT500 is a formidable hard ground trencher designed for subsea cable burial operations. Built in 2018, this machine packs a punch with its capabilities:

- **Strength:** Built to tackle tough jobs, the BT500 can handle trenching in challenging conditions, with a maximum compressive strength rating of 30MPa.
- **Depth:** This trencher can excavate trenches up to 1.2 meters deep, thanks to its heavy-duty rock cutting wheel.
- **Precision:** The BT500 allows for the safe and precise laying of subsea cables with diameters ranging from 10 to 180 millimeters.
- **Deep Sea Operations:** Don't let rough waters slow you down. The BT500 is built to operate in depths of up to 1,000 meters.
- **Compact Design:** Despite its power, the BT500 boasts a relatively compact size (9.4 meters long, 6.3 meters wide, and 5.8 meters high), making it maneuverable for various subsea projects.

The SMD-BT500 is a versatile and powerful tool for subsea cable installation, suited for deep water operations and tough ground conditions.





Flexible Laying Equipment

Alraiedah Underwater owns and operates a complete spread to undertake flexible pipeline laying operations, these being:

- Drive Skid.
- Drive Winches.
- Hydraulic Power Pack.
- 5 Ton Cable Tensioner (2 Tracks)
- 4 Pair Linear Cable Engine (Hydraulically Operated).
- Flexible Stern Chute.
- Assorted rollers stands and chutes.

Cable Laying Equipment

Alraiedah Underwater owns and operates a complete spread to undertake cable/flexible laying operations, these being:

- 1 x 20 Ton (Two Track) Tensioner.
- 2 x 5 Ton (Two Track) Tensioner.
- 2 x 10 Ton Cable Bow Engines
- 2 Pair Linear Cable Engine (Hydraulically Operated).
- 4 Pair Linear Cable Engine (Hydraulically Operated).
- Cable Powered Sheave (Hydraulically Operated).
- 2 x 12.2m Diameter Turn Table (Capacity 750 Tons).
- Set of powered under rollers (Each with a capacity 175 Tons).
- Set of powered under rollers (Each with a capacity 250 Tons).
- Bend Restrictor, Semicircle (Half Moon).
- Bend Restrictor, Quadrant (Quarter Moon).





AL - RAIEDAH UNDERWATER LTD

شركة الرائدة تحت المائية المحدودة

Contact Us



E-mail

Info@raiedha.com



Phone

+966 138204759



Website

www.raiedha.com



Address Detail

P.O. BOX 34442, Office
403, Bldg 6791, Prince
Humoud Bin Abdulaziz
Street, Madinat Al Ummal
District, Al Khobar, KSA